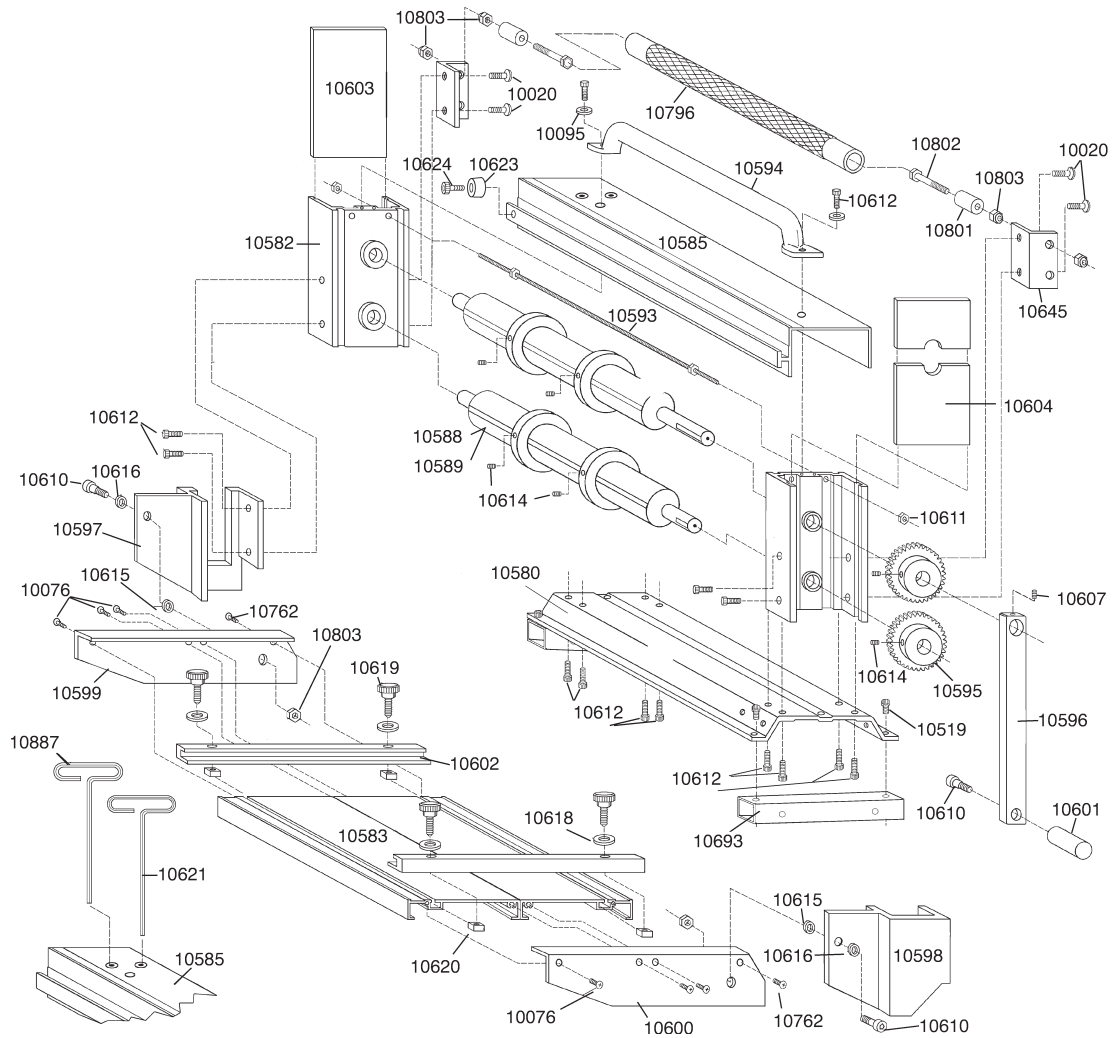


PORT-O-SLITTER®

SLITTING & RIB FORMING SYSTEM



Item #	Description	Item #	Description	Item #	Description
10020	1/4-20 X 5/8" Hex Button HD	10597	Pivot Bracket - Left	10619	5/16" Knurled Knob
10076	10-24 X 3/4" Phil Pan HD	10598	Pivot Bracket - Right	10620	5/16-18 Square Nut
10095	1/4" Flat Washer	10599	Table Arm - Left	10621	5/32" Hex T Wrench
10519	1/4-20 X 3/4" Hex Wash HD	10600	Table Arm - Right	10622	Tape Measure 5'6" (not shown)
10580	24" Slitter Base	10601	Crank Handle	10623	Cut Off Stop
10582	Bearing Support Assembly	10602	Nylon Coil Guide Bar	10624	10-24 X 1/2" Sock Cap Screw
10583	24" Coil Table	10603	End Cap - Left	10644	24" Receiver Roller
10585	24" Slitter Top Cover	10604	End Cap - Right	10645	Receiver Bracket
10586	1 1/2" X 24" Upper Shaft	10607	5/16 X 1/2" Sock Set Screw	10673	1/4-20 X 1 1/2" Hex Cap Bolt
10587	2" X 24" Upper Shaft	10610	3/8" Shoulder Bolt	10693	Base Plate Tube
10588	1 1/2" X 24" Lower Shaft	10611	10-24 Hex Nut	10762	10-24 X 5/8" Phil Flat HD
10589	2" X 24" Lower Shaft	10612	1/4-20 X 3/4" Sock Cap	10796	Roller Cover
10593	24" Tie Bar	10614	5/16-18 X 3/8" Set Screw	10801	Roller Tube Insert
10594	24" Carrying Handle	10615	3/8 X 1/32" Nylon Washer	10802	5/16-18 X 2-1/4" Hex Bolt
10595	Drive Gear	10616	3/8 X 1/16" Nylon Washer	10803	5/16-18 Nylok Hex Nut
10596	Crank Handle Arm	10617	5/16-18 X 3/4" Hex Cap	10887	3/16 Hex Key Wrench
		10618	5/16 Flat Washer	12046	POS Parts Bag